

MINERAL ADMIXTURE

Type 2 – Activated Mineral

INCAP ADMIX

Deep INCAP Protection is an integral crystalline concrete waterproofing admixture. When combined with water, INCAP's proprietary chemicals react to form millions of needle-like crystals. These crystals grow and fill the capillary pores and micro-cracks in the concrete, blocking the flow of water. As time passes and stresses form new cracks, any incoming moisture causes the crystals to reactivate – ensuring continuous waterproofing over the years.

INCAP ADMIX is used in place of externally applied surface membranes to protect against moisture transmission, chemical attack and the corrosion of reinforcing steel.

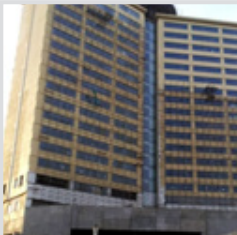
Benefits

- Lowers the cost of waterproofing by as much as 40%
- Helps to shave weeks off of construction schedules
- Reduces the cost of maintenance and repairs
- Increases reliability and quality control
- Increases revenues with a larger building footprint
- Safe for contact with potable water and Drinking Water System Components – Health effects
- Reduction of dirt pick-up on the plaster and concrete surfaces

Applications

INCAP ADMIX is recommended for all concrete that will be subject to water pressure and can be used in recast, cast-in-place and shotcrete applications.

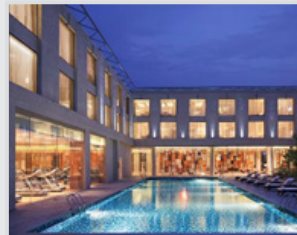
- Below grade parking
- Dams
- Pits
- Basements
- Foundation walls
- Water containment tanks
- Sewage plants
- Footings
- Canals
- Swimming pools
- Slabs



JW Marriott, Cochin



Lulu Mall, Cochin



Courtyard Marriott, Cochin